



National College for
Teaching & Leadership

NPQEL 2017-18

National Professional Qualification for Executive Leadership
Information

The Alliance of Leading Learning (ALL)

- The Alliance of Leading Learning (ALL) is an inclusive school partnership representing all phases and school contexts.
- It is the amalgamation of former Leadership Academy staff (Edge Hill University), and lead school The Marches, along with exemplary school partners and Cognition Education.
- Cognition Education Group is a leading global provider of education consultancy services, professional development, school management, publishing and digital learning, delivering services in more than 20 countries worldwide.
- The ALL mission is to embrace the school led system to provide gold standard professional learning which has life changing impact on children and young people.



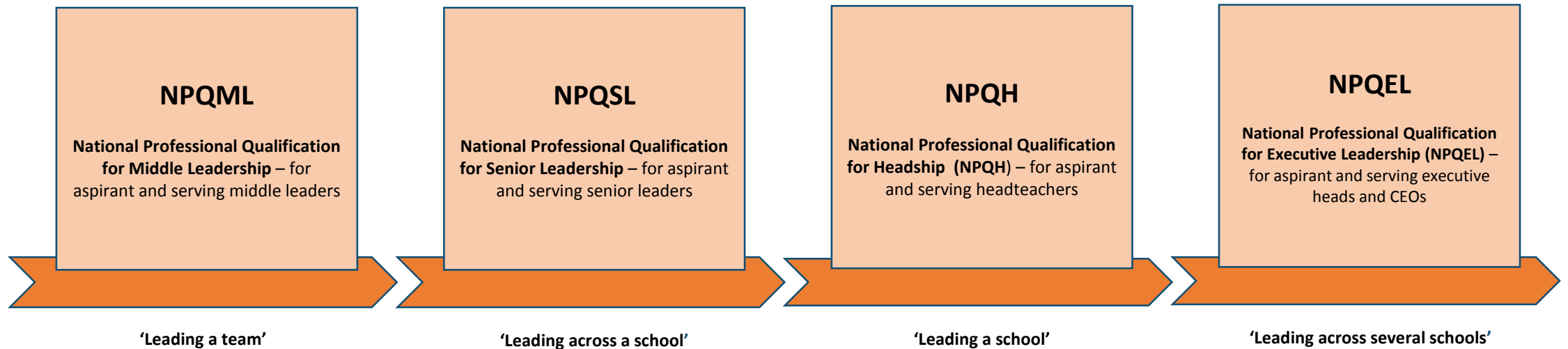
In partnership with:
Cognition
Education

OUR CLIENTS
2,000+

TRAINED PEOPLE
200,000+

OUR LEARNERS
2 MILLION+

National Professional Qualifications 2017-18

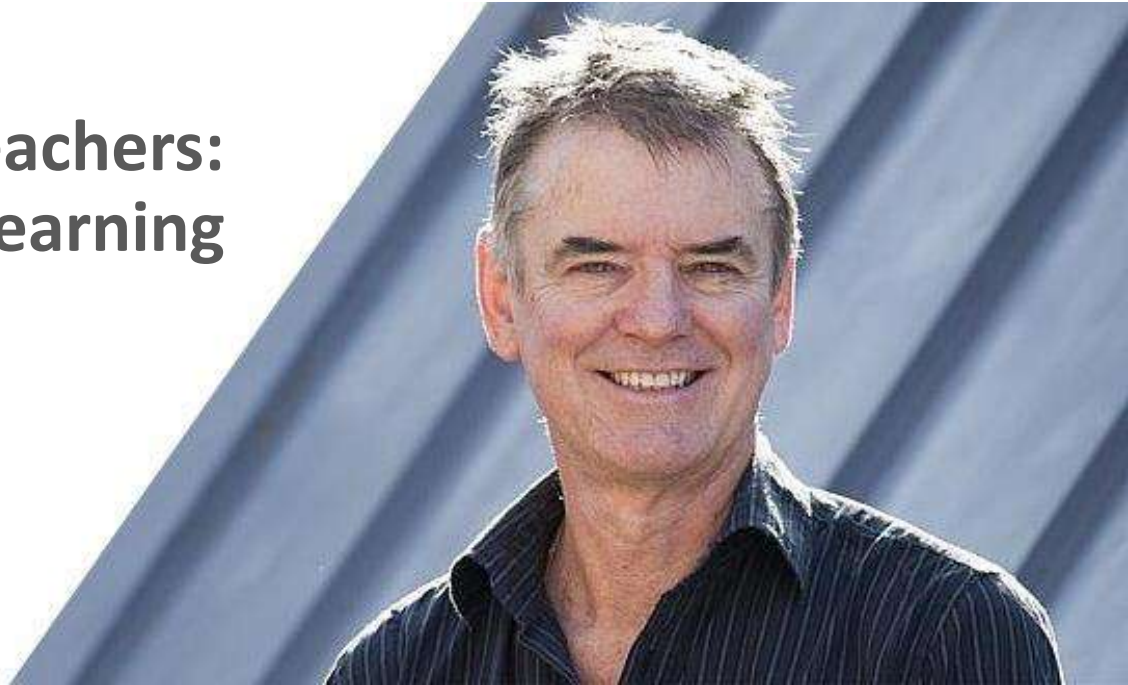


Evidence-based Research

Evidence-based research informs all of the NPQ programmes:

“School leaders need to stop creating schools that attempt to lock in prior achievement and experiences (such as by using tracking), and instead be evidence-informed about the talents and growth of all students by welcoming diversity and being accountable for all (regardless of the teachers’ and schools’ expectations).”

**John A.C. Hattie, Visible Learning for Teachers:
Maximizing Impact on Learning**



NPQEL



In partnership with:
Cognition
Education



Designed in collaboration with some of the country's leading academics and executive leaders from the public and private sector, NPQEL is a **nationally recognised** qualification which will develop talented leaders from all backgrounds to deliver educational excellence in a self-improving system, and high-quality outcomes for pupils and students. NPQEL:

- takes account of your professional development needs, prior learning and achievements;
- improves and develops further your strategic leadership expertise;
- develops key leadership and management skills;
- provides opportunities to work in different educational and business contexts; and
- gives you the confidence and competence to operate effectively at executive leadership level, so you are able to make a positive impact on your schools, and on the lives of children, young people and their families.

NPQEL Timeline



Who Can Apply?



The National Professional Qualification for Executive Leaders (NPQEL) is the first-choice qualification for those who are, or are aspiring to become, an executive headteacher or CEO of a MAT with responsibility for leading across several schools.



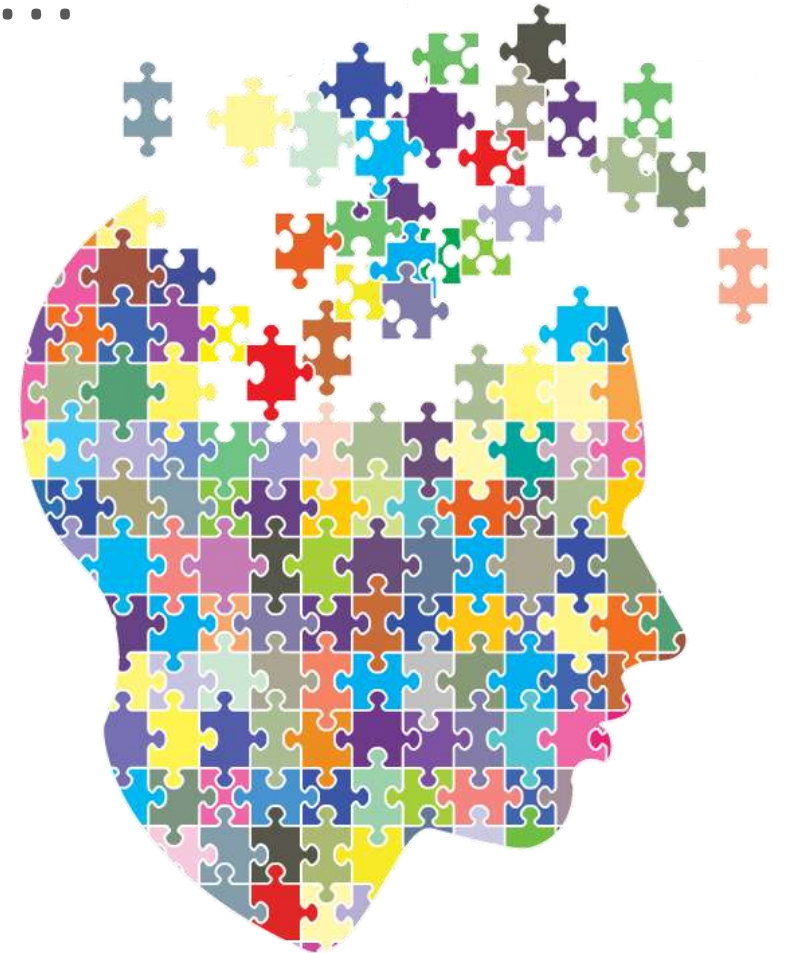
What Will I study

NPQEL Covers SIX
study modules



The Modules are Designed to

- Stimulate, challenge and provoke thinking
- Build and extend knowledge, skills and expertise
- Promote changes and improvements in leadership behaviour



Your Learning



Our NPQEL programme Includes:

- A Leadership Diagnostic
- Face to face activity, included peer and facilitated learning at events
- Reading, reflection and online Learning
- Support with self-directed school-based tasks
- A Business Coach and support throughout the course
- Access to our national and international Professional Learning Community
- A one week placement.

How Will I be Assessed?

The final assessment is comprised of two sections:

- Designing a sustainable business development strategy for the organisation (4,000 words).
- Leading a strategic improvement project across several schools (4,000 words).
- You will be required to submit a project portfolio of evidence, detailing your development as a leader throughout the programme. You will be able to choose a window for your assessment within an 18 month timescale.

Cost

- £4,600, including UK Placement.
- However, participants can opt to complete an international placement through Cognition Education's unique links for an additional cost – (assuming economy class travel):
 - Middle East – approximately £1,500 – £2,000
 - Far East – approximately £1,500 – £2,000
 - USA – approximately £1,500 – £2,500
 - Australia/New Zealand – approximately £1,500 – £2,500
- Bursaries may be available for those in Category 6 areas – please contact us for further information.



How Do I Apply?

- Please complete the online registration form at:
<http://leadinglearning.marchesschool.co.uk/register/>
- OR email NPQEL@cognitioneducation.com
- For an informal chat or further information, please call:
 - Julia Richards – 07388 376341
 - Melanie Hilton – 07830 208005

Website

<http://leadinglearning.marchesschool.co.uk/>

Remote Desktop 01 664400



In partnership with:
Cognition
Education

Search the website



Home

About Us ▾

Partner Schools ▾

Programmes ▾

Testimonials ▾

Registration

Contacts


International Projects

Gold Standard Leadership Learning with Impact

Register Now for NPQ
Programmes

Why Choose The Alliance of
Leading Learning?



Recent News 

**Alliance of Leading Learning
(ALL) partner with International
Education Professor John Hattie**

14th July

[READ MORE](#)

**Festival of Education 2017 is a
Huge Success!**

14th July

[READ MORE](#)